

C-212-281

Dr. Wm Smith No 5603

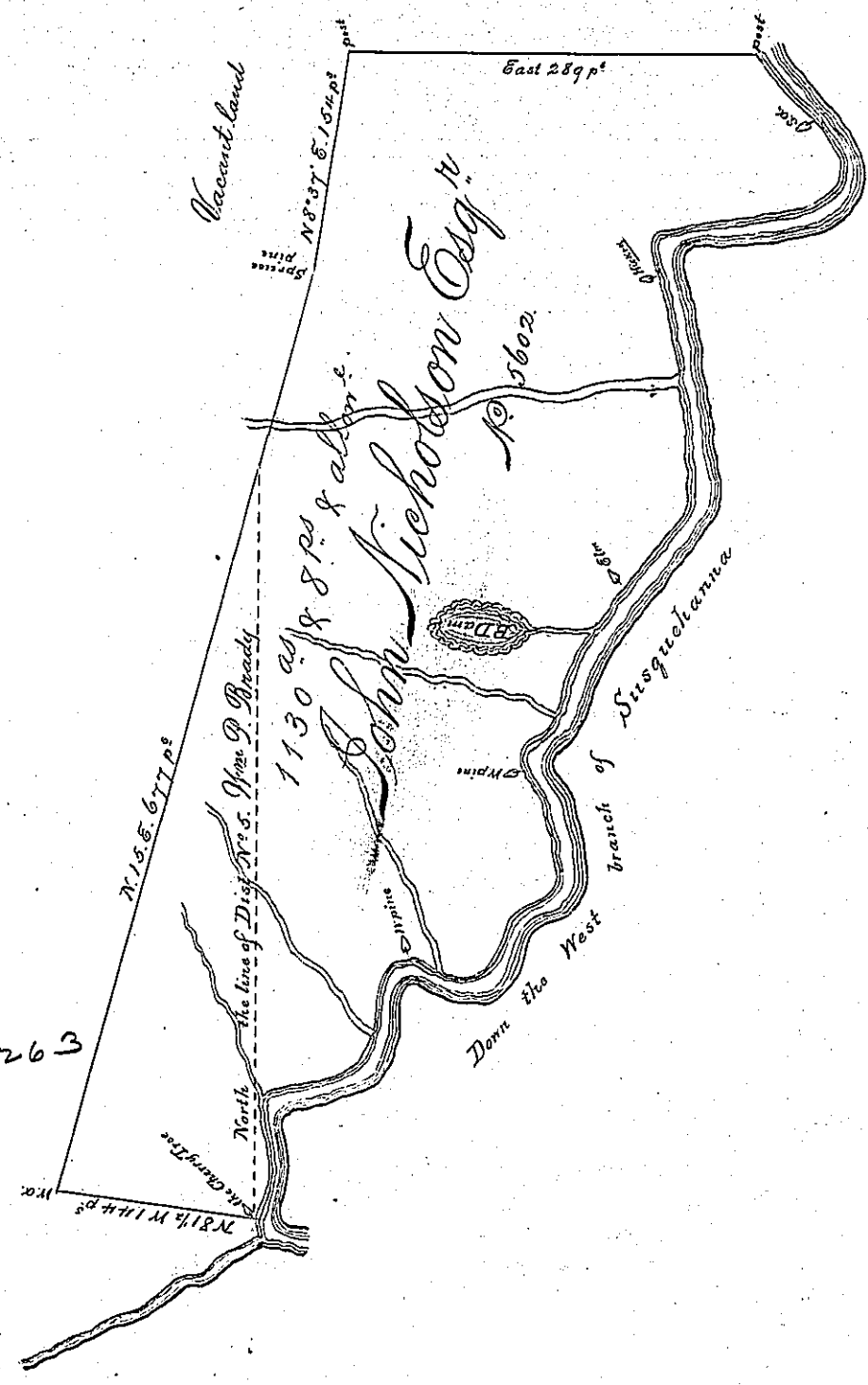
The Courses &c from the post below upward to the Cherry Tree

S	28	E	37 p ^s
S	67	E	27 s.c.
S	31	E	23
S	10	E	17
S	19	W	6
S	49	W	11
S	70	W	21
S	82	W	101 No.
S	4	E	38 Hic ^s
S	30	E	27
S	10	W	23
S	7	E	20
S	81	E	5
S	19	E	9
S	5	W	40
S	9	E	45
S	47	W	47
S	26	W	22 Elm
S	62	W	26
S	28	W	36
S	26	W	18
S	13	W	25
South			6
S	74	W	22
S	7	W	28 Wp
S	36	E	31

Continued

S	56	E	12
S	50	W	15
S	68	W	36
S	5	W	32
S	57	W	12
S	69	W	13
N	59	W	47 pine
S	62	W	46
S	5	W	27
S	20	W	14
S	52	W	9
S	54	W	74
S	15	E	28
S	5	E	29
S	40	W	16
South			8
S	114	W	10 post o ^l

4 p^s above the Cobb Tree



Situate on the West branch of Susquehanna in the New Purchase Contain-
 ing 1130^{ac} & 8 p^s and the usual allowance of Six per Cent for Roads Highways
 &c Surveyed the 19th day of June 1794 in pursuance of a Warrant Granted to
 John Nicholson Esq^r No 5602 dated the second day of April 1794

To Daniel Brodhead S. G.

James Hunter Del

IN TESTIMONY that the above is a copy of the original remaining on file in the Department of
 Internal Affairs of Pennsylvania, made conformably to an Act of Assembly
 approved the 16th day of February, 1833, I have hereunto set my Hand
 and caused the Seal of said Department to be affixed, at Harrisburg, this
 Seventh day of September 1897

James W. Fatta
 Secretary of Internal Affairs